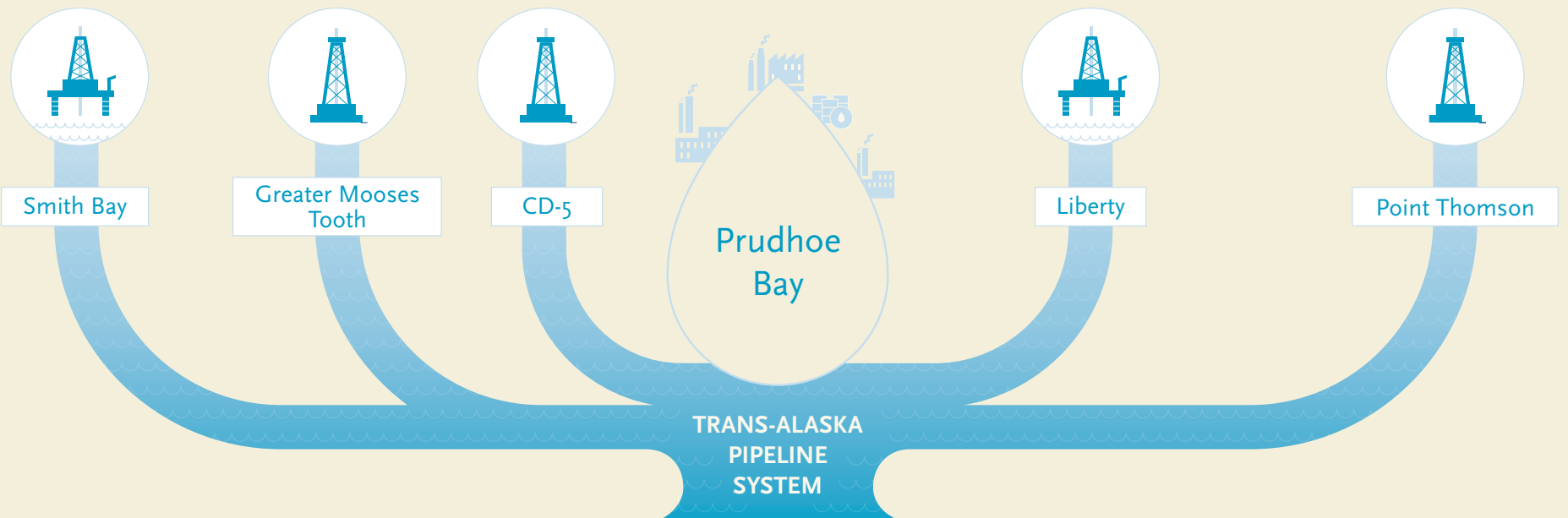
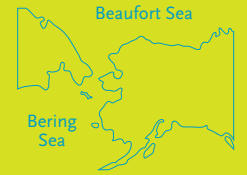


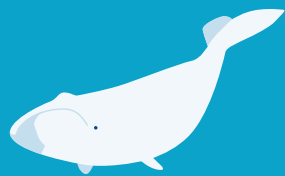
# Oil and gas activity along Alaska's Beaufort Sea coast



threatens key habitat and may affect opportunities for subsistence...



**Iñupiat hunters**  
Pursue game in affected areas



**Bowhead whales**  
migrate along the Beaufort coast



**Polar bears**  
Use the Beaufort coast for denning and other critical activities



**Caribou**  
roam the tundra in vast herds



**Pacific brant**  
gather by the thousands around Teshekpuk Lake

and requires integrated planning & management.



**Regional - scale planning**



**Whole - Of - Government approach**



**Meaningful stakeholder engagement**

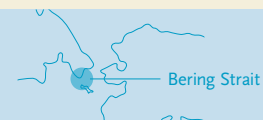


**Identify & protect important areas**

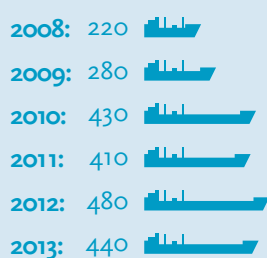


**Rigorous analysis of cumulative effects**

## Transits of the Bering Strait



### Actual



### Projected for the year 2025

Assuming container vessels do not opt to use Arctic shipping routes in place of the Suez and Panama canals.

#### Scenarios:



Assuming some container vessels opt to use Arctic shipping routes in place of the Suez and Panama canals.

#### Scenarios:



Resource: International Council on Clean Transportation's Report entitled "A 10-Year Projection of Maritime Activity in the U.S. Arctic Region" (Jan. 2015) pg. 23 Table 3.1 and pg. 57, Table 5.5